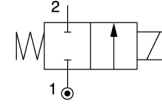


Oil burner valves 2/2 - Direct operated

Port size	Orifice (mm)	Flow factors (L/min)		Admissible differential pressure bar			Fluid temp. °C	Seat disc	Reference numbers				Power consumption (W)		Wt. (g)	Dim ref.
		kv	Qmax	Min	Max				Global valve reference	Valve reference no.	Housing	Coil	DC	AC		

Brass body/Pipe mounting

Normally closed



1/8	3	4	-	0	-	30	160	Ruby	7121KBG1NRT0	121K2423 ¹	8760.23	483824	-	19	420	107	
	3	4	-	0	-	30	160	Ruby			8520.23	483824	-	19	480		
1/4	1.2	0.85	8.5	0	36	80	100	Ruby	7121KBG2ER00	E121K65	2995	481865	9	8	290	3	
	1.2	0.85	8.5	0	43	100	130	Ruby			4270	481000	8	8	410		
	1.2	0.85	8.5	0	75	100	120	Ruby			4270	486265	14	14	420		
	1.5	1.5	15	0	25	60	100	Ruby	7121KBG2GR00	E121K67	2995	481865	9	8	290	3	
	1.5	1.5	15	0	30	75	130	Ruby			4270	481000	8	8	410		
	1.5	1.5	15	0	55	100	120	Ruby			4270	486265	14	14	420		
3/8	2.5	3.5	25	0	10	28	100	Ruby	7121KBG2LR00	E121K63	2995	481865	9	8	290	3	
	2.5	3.5	25	0	12	34	130	Ruby			4270	481000	8	8	410		
	2.5	3.5	25	0	22	50	120	Ruby			4270	486265	14	14	420		
	3	4.5	-	0	-	30	160	Ruby	-	121K6423 ¹	8520.23	483824	-	19	470	107	
	3	4.5	-	0	-	30	160	Ruby	7121KBG2NRT0		8760.23	483824	-	19	410	107	
	3	4.5	27	0	7	20	100	Ruby	7121KBG2NR00		E121K64	2995	481865	9	8	290	3
3	4.5	27	0	8.5	25	130	Ruby		4270	481000		8	8	410			
3	4.5	27	0	15	36	120	Ruby		4270	486265		14	14	420			
3/8	4	7.5	10.5	0	4	10	100	FKM	7121KBG3QV00	121K3206	2995	481865	9	8	340	3	
	4	7.5	10.5	0	5	10	120	FKM			4270	481000	8	8	460		
	4	7.5	10.5	0	10	10	120	FKM			4270	486265	14	14	470		
	5	11	11.5	0	2	7	100	FKM	7121KBG3SV00	121K3106	2995	481865	9	8	340	3	
	5	11	11.5	0	2.8	7	120	FKM			4270	481000	8	8	460		
	5	11	11.5	0	5	7	120	FKM			4270	486265	14	14	470		
	3/8	6	12	12.5	0	1.1	5	100	FKM	7121KBG3UV00	121K3306	2995	481865	9	8	340	3
		6	12	12.5	0	1.5	5	120	FKM			4270	481000	8	8	460	
		6	12	12.5	0	3	5	120	FKM			4270	486265	14	14	470	
		11	22	13.5	0	-	30 ²	160	FKM	7121GBG34VT0	121G2320 ¹	8760.23	483541	-	20	-	108
11		22	13.5	0	-	30 ²	160	FKM		8520.23		483541	-	20	-		
1/2		14	25	15	0	-	30 ²	160	FKM	7121GBG45VT0	121G2520 ¹	8760.23	483541	-	20	-	108
	14	25	15	0	-	30 ²	160	FKM		8520.23		483541	-	20	-		
	14	25	15	0	-	19	160	FKM	7121GBG45VT1	121G2523 ¹	8520.23	483824	-	19	480	107	

Table continued on page 106

Notes:

1. TUV approved for oil burners
2. Max. static pressure = 30 bar; max pressure differential = 0.2 bar

Oil burner valves 2/2 - Direct operated

DIN 43650A

M5x5 mm

Values in brackets for G 3/8 valves
 Valeurs entre parenthèse pour valves G 3/8
 Angaben in Klammern für G 3/8 Ventile

Dimension reference 3

121 K: 78
122 K: 85.5

M5 x 6mm

Dimension reference 107

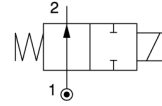
Pg 11

Dimension reference 108

Oil burner valves 2/2 - Direct operated

Port size	Orifice (mm)	Flow factors (L/min)		Admissible differential pressure bar			Fluid temp. °C	Seat disc	Reference numbers				Power consumption (W)		Wt. (g)	Dim ref.
		kv	Qmax	Min	Max				Global valve reference	Valve reference no.	Housing	Coil	DC	AC		
G					DC	AC										

Normally open



Brass body/Pipe mounting

1/8	2.5	3.5	-	0	-	30	160	Ruby	7122KBG1LRT0	122K9321	1	8760.23	483824	-	19	455	105
	2.5	3.5	-	0	-	30	160	Ruby					8520.23	483824	-	19	515
	2.5	3.5	-	0	-	30	140	Ruby	7122KBG1LR00	122K9363		4270	481044	-	14	445	4
	2.5	3.5	-	0	30	30	140	Ruby					4270	486265	14	14	455
1/4	2.5	3.5	-	0	-	30	160	Ruby	7122KBG2LRT0	122K8321	1	8760.23	483824	-	19	435	105
	2.5	3.5	-	0	-	30	160	Ruby					8520.23	483824	-	19	495
	2.5	3.5	-	0	-	30	140	Ruby	7122KBG2LR00	122K8363		4270	481044	-	14	425	4
	2.5	3.5	-	0	30	30	140	Ruby					4270	486265	14	14	435
	4	6.5	-	0	-	30	160	Ruby	7121KBG2QRT0	121K6220	1	8520.23	483541	-	20	-	105
4	6.5	-	0	-	30	160	Ruby					8760.23	483541	-	20	-	

Notes:

1. TUV approved for oil burners

Oil burner valves 2/2 - Direct operated

